

## Instruction Sheet For Access Armor

Model	Size
AA9x12UL	9 in by 12 in.
AA9x36UL	9 in by 36 in.
AA12x15UL	12 in by 15 in.
AA15x18UL	15 in by 18 in.
AA23x23UL	23 in by 23 in.

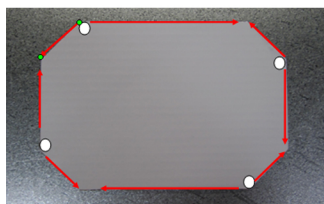
### Pre-Installation

Make sure there are no obstructions that will be in the way of the mounting area on the duct such as electric boxes, conduits, brackets, etc.

**1) Remove backing from the supplied template and place on duct in desired location.**

**2) Closely cut duct around the perimeter of template and remove portion of duct. We recommend using a small jig-saw blade #30076 or conventional sheet metal nibbler.**

**You may want to drill a pilot hole in the 4 corners to make cutting easier.**



**3) Center and place Access Armor Duct Door into opening, being sure that all D-ring fasteners are in the "open"/counter-clockwise position.**

**Note: De-burring perimeter of duct opening is recommended to ensure proper fitting for access door and to reduce risk of injury.**

**4) Once in place, turn fasteners clockwise to compress Access Armor Door to duct, creating an air tight seal. This completes your installation.**

