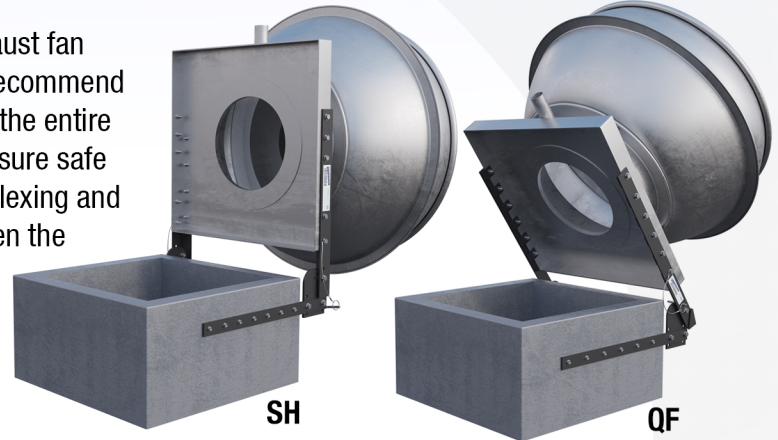




Sizing Recommendations

In order to provide effective support and to safely hinge an exhaust fan using any Super Hinge exhaust fan hinging system, we highly recommend that you choose a model which supports anywhere from 2/3 to the entire fan base. By following Omni's sizing guidelines, you not only ensure safe support of the thin material of the fan base, you also eliminate flexing and bending of the fan base which can compromise the seal between the bottom of the fan and the duct it is mounted to. Failure to do so greatly increases the risk of damaged fan bases, inefficient exhaust draw due to vacuum leaks, grease seepage and personal injury due to fan base or hinging failure.

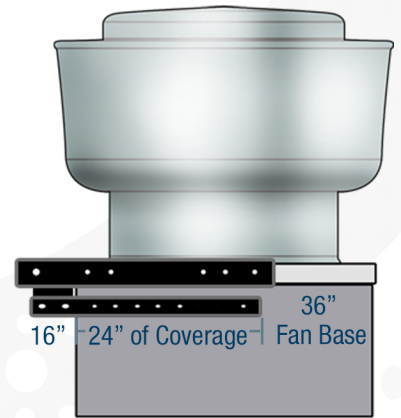


Hinge Model

Proper Size of Fan Base

QF-18	(Provides 12" of coverage)	12"-18"
QF-24	(Provides 18" of coverage)	18"-28"
QF-30	(Provides 24" of coverage)	24"-36"
QF-36*	(Provides 30" of coverage)	30"-45"
QF-42*	(Provides 36" of coverage)	36"-54"
SH-18	(Provides 12" of coverage)	12"-18"
SH-24	(Provides 18" of coverage)	18"-27"
SH-30	(Provides 24" of coverage)	24"-36"
SH-36*	(Provides 30" of coverage)	30"-45"
SH-42*	(Provides 36" of coverage)	36"-54"
SH-48*	(Provides 42" of coverage)	42"-63"

30" Hinge Kit Example



* When hinging larger fans with bases that exceed 36", or extremely heavy fans, it is strongly recommended to hinge the complete base of the fan and install our heavy duty chain support kit. 30" hinges and larger come with the HD-Chain Kit for additional support. If you purchase a hinge under 30" and would like an HD-Chain Kit for \$25.00, let your sales representative know when you place your order.

Restaurant Accessories Store by CJ's, Omni Supply or Omni Containment Systems LLC will not be held responsible for any damage to fan, duct, roof or injury to personnel if Super Hinge is installed improperly or mounted to a fan larger than what has been specified by manufacturer.



781-436.8864 • Info@restaurantaccessoriesstorebycjs.com • restaurantaccessoriesstorebycjs.com

Products distributed by



OMNI SUPPLY
RESOURCE FOR THE KEC INDUSTRY

© 2021 All Rights Reserved